

Pro:Centric® Server

▶ **PCS200R**



The PCS200R is a stand-alone Linux appliance that manages and controls LG's Pro:Centric Free-To-Guest (FTG) Application, delivering unique digital content to hotel guest room TV's via the existing RF or IP distribution network.

The PCS200R can also be used to remotely edit the FTG televisions' channel map and installer menu configuration, dramatically reducing installation cost and future room visits.

Utilizing a spare RF channel for communications, the PCS200R broadcasts it's information to Pro:Centric enabled TVs enabling guests to select customized content for in-room viewing using the TV remote control, such as hotel amenities, daily weather, and interactive electronic program guide (EPG). The appliance captures data updates via the Internet to populate its EPG, weather forecast and other services, enabling the most up to date information to be presented to the guests' TVs.

The PCS200R now supports eight contiguous 256-QAM channel output. One QAM channel is allocated for Pro:Centric data delivery and the other seven provide the ability to play 2 or 3 videos per QAM channel for a maximum of 21 video stream playouts from the server (depending on the bit rate and bandwidth). A dedicated Ethernet output port is also provided to enable multi-cast broadcast of content over an IP network. Video files can be stored on a customer-supplied Solid State Disk Drive (SSD), which can be plugged directly in to the PCS200R (contact LG for further information).

The Pro:Centric server also supports delivery of 3rd Party developed Applications (Java™/Adobe® Flash®) from LG's to Pro:Centric televisions, "OEM Mode".

Features

Simple Installation

Uses the existing RF/IP network, internet connection input, and modulated RF (QAM), IP or ASI output

Minimal Head-End Rack-Space

Small, lightweight chassis, 1U height profile, 19-inch rack-mountable

High Reliability

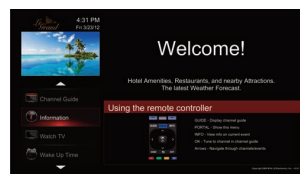
The PCS200R design has 'no moving parts' with solid state memory and no internal disk to provide a highly reliable hardware platform.

Remote Support

Remote administration, configuration, and maintenance via VPN server; Management of television channel map and installer menus

(New) Supports PCA Pro:Centric Application (PCA) V3.0

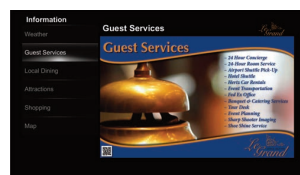
PCS200R supports all the functions of PCA 1.5 and new features of PCA 3.0 such as New Classic Premium Template with improved navigation scheme, and presentation of up to forty billboards which can be nested under title buttons and up to two information sections.



Welcome Page



Weather Billboard



Customized Billboard



Map Billboard

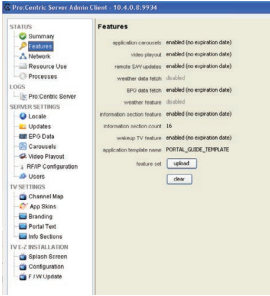
Pro:Centric Server



SERVER ADMIN CLIENT

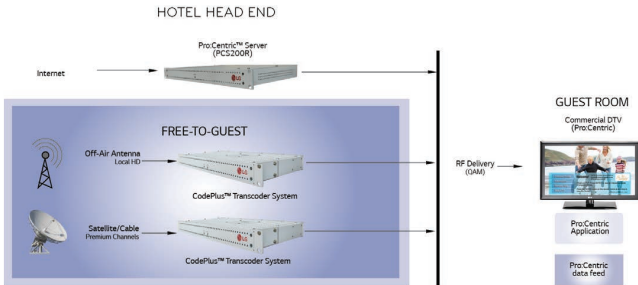
An Admin Client Graphical User Interface (GUI) is provided and is remotely accessible via the Internet using VPN service and a standard web browser, to provide System Integrator administration users with a full suite of features to manage and support the Pro:Centric system, including:

- System status and logs, and server settings
- Configuration for Channel Guide lineup
- Hotel branding and Billboard creation and editing
- Managing television configurations settings and software updates



For further details, refer to the Pro:Centric™ Server Admin Client User Guide, P/N: **206-4143**, (also accessible on the system).

TYPICAL FTG Pro:Centric PCS200R INSTALLATION



PRO:CENTRIC VPN SERVER

Remote management of the PCS200R server functionality is provided via a secure, built-in VPN client that connects to the centralized VPN server. In this way, remote configuration management, remote software updates and other services are supported. Free hosting of the service is provided by LGE during the warranty period. Extended support plans are available.

INSTALLATION REQUIREMENTS:

Installation of the PCS200R requires the following:

- 1U rack space in the Head-end room
- Ethernet Connection (VPN and FTP open)
- 1 x 110/120VAC power outlet
- 1 coax drop to the RF combiner to feed the output of the server into the RF network

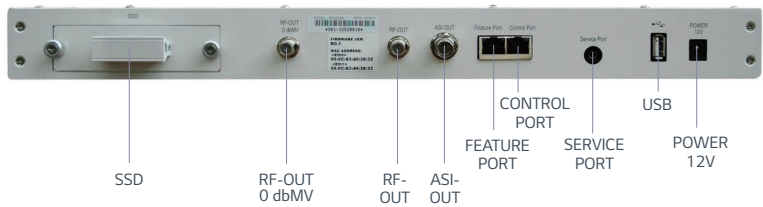
Note that no local monitor or keyboard is required for the server.

For further details on the Server installation, refer to the Installation & Setup Guide, Part No: **206-4142**.

Please contact your LG sales representative for a list of compatible Pro:Centric television models.

	Model	PCS200R	
SYSTEM SOFTWARE	Software	Linux OS kernel 3.4	
		Globally Executable MHP(GEM) server applications	
ENVIRONMENTAL STORAGE CONDITIONS	Data Output	ASI,RF(256 or 64 QAM), 100/1000T Ethernet	
	Rear Port	ASI/RF/RF Test/TTL serial/USB 1 Port, Ethernet 2 Port	
ENVIRONMENTAL OPERATING CONDITIONS	Storage Temperature	-4° to 158° Fahrenheit (-20° to 70° Celsius)	
	Humidity	95% Non-condensing	
ELECTRICAL	DC Input	+12V DC @ 3.25 Amps Adaptor	
	RF Output Connectors (2)	75 Ohm, Type 'F'	
	RF Output Frequency Range	VHF/UHF 54-865 MHz	
	RF Output Span	Up to 8 Contiguous Channels (Typically 48-64 MHz)	
	RF Output Level	-6 dbm (+42 dbmV) Minimum, -2 dbm (+46dbmV) Typical	
	0 dbmV RF Output Level	-48.75 dbm (0dbmV) Typical	
	Frequency Accuracy	5 ppm	
	ASI Out Jack	75 ohms, BNC	
	Level at ASI Out Jack	800 mv	
	Ethernet Connector (Control Port)	10/100/1000BaseT, RJ45	
	Ethernet Connector (Feature Port)	100/1000BaseT, RJ45	
	USB Port	USB 2.0	
RS-232 Serial Audio Jack	Command Line Interface port (5V TTL)		
MODULATION SPECIFICATIONS	Standard	ITU-T Annex B (QAM-B)	
	Constellations	64-QAM, 256 QAM	
	Symbol Rate	64-QAM	6.900 Mbaud
		64-QAM	5.360537 Mbaud
	Interleaving	Fixed l=128, J=1	
	Standard	EN 300 429 V1.2.1 (DVB-C)	
	Constellations	64-QAM, 256 QAM	
	Symbol Rate	64-QAM	6.900 Mbaud
		64-QAM	6.111 Mbaud
		256-QAM	6.900 Mbaud
256-QAM	6.111 Mbaud		
WARRANTY	1 Year		
CERTIFICATION	Regulatory Compliance	FCC, UL, RoHS	
DIMENSIONS	Unit Dimension (WxHxD, mm)	19.0" x 1.7" x 8.5"	
	Unit Weight (Rack-only)	5.65 lbs.	
UPC CODE	7 19192 91554 1		

REAR VIEW



LG Electronics USA, Inc.
HE B2B Division
2000 Millbrook Drive
Lincolnshire, IL 60069

Customer Service: 888.865.3026
www.LGsolutions.com/support

Contact your LG Regional Sales Representative:
Channel: 800.897.8871
Hospitality: 800.228.1236
E-mail: info@LGSolutions.com

SPEC_PCS200R_081410_PR



All screen images are simulated. Dimensions and weights are approximate. Design, features and specifications subject to change without notice.

© Copyright 2014 LG Electronics USA Inc. All Rights Reserved. "LG Life's Good" is a registered trademark of LG Corp. Pro:Centric is a trademark of LG Electronics Inc. All other product and brand names are trademarks or registered trademarks of their respective companies.

Printed in the USA, November 2014